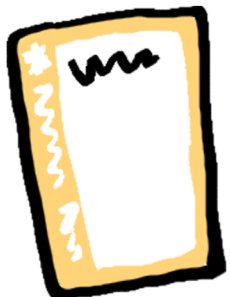


# CARDS



**NEW RULE:** PLACE NEXT TO BASIC RULE CARD. IF IT CONTRADICTS A RULE ALREADY IN PLAY DISCARD THAT RULE (NEW RULES TAKE EFFECT IMMEDIATELY).



**KEEPER:** PLACE IN FRONT OF PLAYER. PLACING IT COUNTS AS PLAYING A CARD.



**ACTION:** USE ONCE AND DISCARD, FOLLOWING THE INSTRUCTIONS ON THE CARD.



**GOAL:** PLACE NEXT TO BASIC RULE CARD. DISCARD PREVIOUS GOALS.

# CHEMISTRY FLUXX<sup>®</sup> COMPOUNDS



2-5  
PLAYERS



8+  
AGE



5-15 MINS  
GAME TIME

## HOW TO WIN

MEET THE CONDITION OF THE CURRENT GOAL CARD.

## HOW TO PLAY

1. REMOVE THE CARD META RULE – GOAL FOUNDRY FROM THE DECK
2. PLACE THE 'FLUXX – BASIC RULES' CARD IN THE CENTRE OF THE TABLE.
3. SHUFFLE THE REMAINING CARDS THOROUGHLY.
4. DEAL EACH PLAYER THREE CARDS.
5. SELECT A PLAYER TO GO FIRST. PLAY PROCEEDS IN A CLOCKWISE DIRECTION.
6. PLAYERS TAKE TURNS DRAWING AND PLAYING THE NUMBER OF CARDS INDICATED BY THE CURRENT RULES UNTIL SOMEONE MEETS THE CURRENT GOAL CONDITION.
7. START BY PLAYING THE BASIC RULES (DRAW ONE CARD AND PLAY ONE CARD) AND ADAPT TO ALL ADDITIONAL NEW RULE CARDS AS THEY ARE PLAYED.

# ELEMENTS AND COMPOUNDS

(EXPLAINED THROUGH FLUXX)

EVERYTHING, EVERYBODY, AND EVERY CARD GAME IS MADE UP OF ELEMENTS. ELEMENTS ARE THE RAW BUILDING BLOCKS THAT MAKE UP EVERYTHING.

AN ELEMENT IS AN ATOM THAT HAS A SPECIFIC NUMBER OF PROTONS, NEUTRONS, AND ELECTRONS


THE ELEMENT CARBON HAS 6 PROTONS, 6 ELECTRONS, AND 6 NEUTRONS. IF YOU ADD AN EXTRA PROTON THEN YOU NEED AN EXTRA ELECTRON TO STOP IT BEING CHARGED AND EXCITED, AND AN EXTRA NEUTRON TO MAKE IT STABLE. AND ADDING ALL THOSE MAKES CARBON BECOME NITROGEN.

IN FLUXX THE ELEMENTS ARE THE KEEPERS. 

ELEMENTS ARE THE SMALL UNITS OF BIGGER MOLECULES CALLED COMPOUNDS.

COMPOUNDS COME IN MANY DIFFERENT TYPES. ALL OF THEM ARE COMBINATIONS OF ELEMENTS OR EVEN THE SAME ELEMENT BONDED TO ITS SELF.

WHEN COMBINED THE COMPOUNDS THEY FORM ARE COMPLETELY DIFFERENT FROM THE ELEMENTS THAT THEY ARE MADE UP OF.

IN FLUXX THE COMPOUNDS ARE THE GOALS AND ARE WON BY HAVING THE KEEPERS (ELEMENTS) THEY ARE MADE UP OF. 

# COMPOUND QUIZ

WHAT'S THE DIFFERENCE BETWEEN AN ELEMENT AND A COMPOUND?

WHICH OF THE FOLLOWING IS A COMPOUND?

H<sub>2</sub>O

Na

CH<sub>4</sub>

H<sub>2</sub>SO<sub>4</sub>

HCL

H

WHICH OF THESE CONTAINS SIX SULPHUR ATOMS AND TWO OXYGEN ATOMS?

S<sub>2</sub>O<sub>2</sub>

S<sub>6</sub>O<sub>2</sub>

SO<sub>3</sub>

SO

MATCH THESE COMPOUNDS TO THEIR COMMON NAMES

RUST •	> CO <sub>2</sub>
CARBON DIOXIDE •	> C <sub>12</sub> H <sub>22</sub> O <sub>11</sub>
SALT •	> N <sub>2</sub> O
SUGAR •	> FE <sub>2</sub> O <sub>3</sub>
LAUGHING GAS •	> NaCl

